

Gateway UPGRADE NORTH

Date: 25 February 2016
Ref no: CN0017

Night works: site establishment, Nudgee

As part of the Gateway Upgrade North project, the Nudgee Road interchange is being upgraded. This will include the construction of a new Nudgee Road bridge over the Gateway Motorway, extended on and off-ramps and upgrades to Nudgee Road and Childs Road.

Site establishment works for the Nudgee Road interchange upgrade will start from early March 2016 and activities will include:

- clearing vegetation
- installation of traffic barriers and line marking
- installation of temporary offices and other facilities on Nudgee Road
- transporting machinery, equipment and materials to site
- building a construction access off Nudgee Road.

Refer to the map overleaf for the location of site establishment works.

Most activities will occur during the day. However, where there is potential to impact on the Gateway Motorway, or the on and off-ramps, works will be undertaken at night, when traffic volumes are lower to ensure the safety of motorists and workers.

Site establishment activities will be carried out during **March and April 2016.**

Working hours:

A combination of day and night works will be required to complete these activities.

Working hours include:

- **Day works:** Monday to Friday, 7.00am to 6.00pm and Saturday from 8.00am to 1.00pm.
- **Night works:** Sunday to Thursday, 7.00pm to 5.00am.

Please note, the timing of all activities is subject to weather and construction conditions. Should activities be delayed by weather, they will be rescheduled for the next available work shift.

What to expect during these works:

- Lane closures, reduced speed limits and police/traffic control will be in place on the Gateway Motorway.
- Short-term delays for motorists passing through the work area.
- The use of heavy construction equipment and machinery, including excavators, cranes and large delivery vehicles.
- An increase in noise during some activities, including vegetation clearing and chipping.
- The use of temporary lighting towers to provide additional light within the work area. Lighting towers will be directed away from surrounding properties, where possible.
- The transfer to and from site of large machinery and equipment.
- The use of flashing lights and reversing beepers on machinery and vehicles for the safety of workers.

Sign up to receive project updates

Visit gatewayupgradenorth.com.au to see the latest information on the project and subscribe to receive updates about construction works.



Australian Government

BUILDING OUR FUTURE

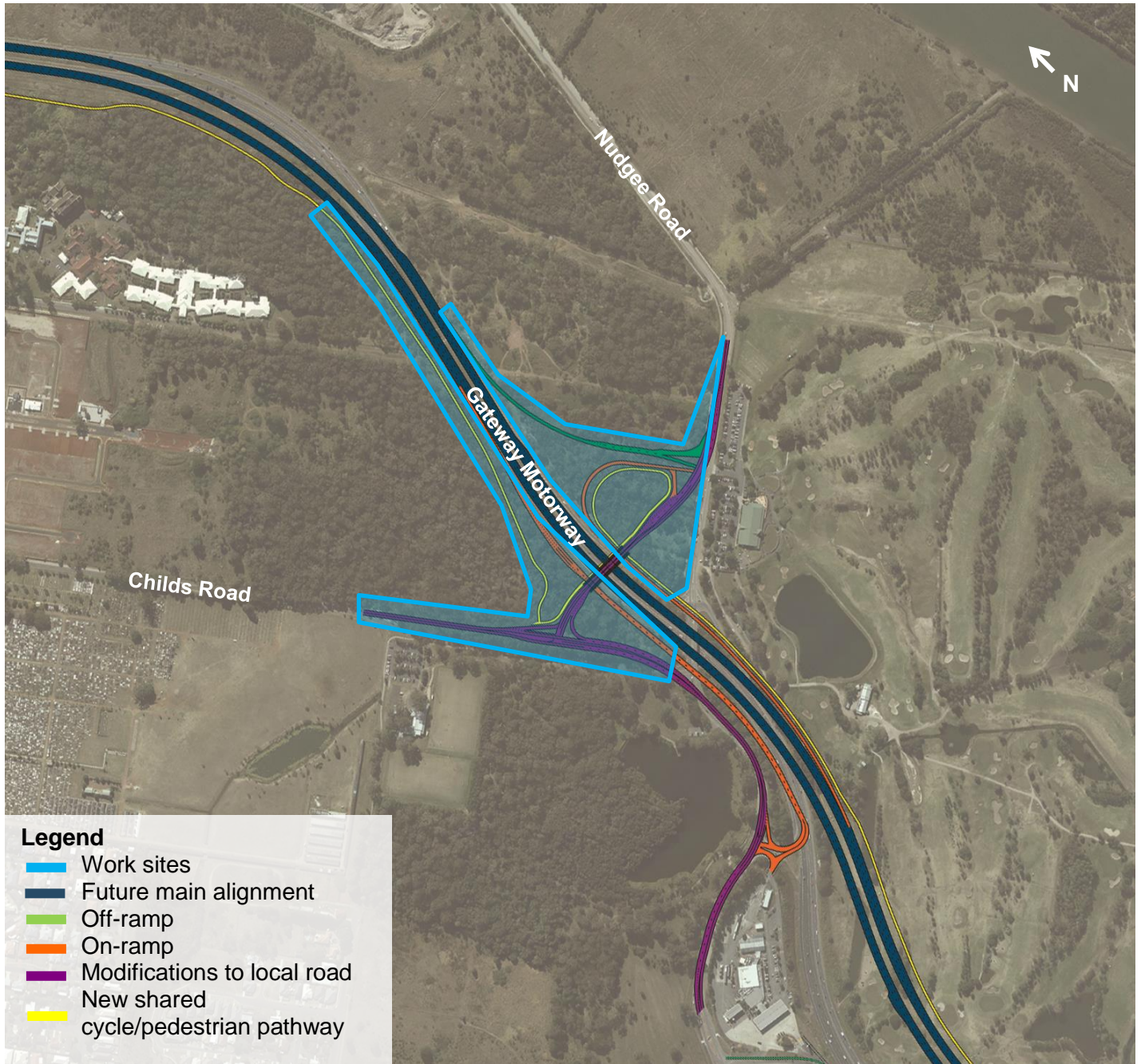
transurban



Queensland Government

Night works: site establishment, Nudgee

The map below shows the approximate location of the worksite for the Nudgee interchange and the design of the upgrade in this area.



Contact details

The project team is committed to working with the community to better understand your views and ensure the successful delivery of the Gateway Upgrade North project.

You can contact the project team via:

✉ contactus@gatewayupgradenorth.com.au

☎ 1800 607 755 (freecall)

🌐 www.gatewayupgradenorth.com.au

*Free call from anywhere in Australia, call charges apply for mobile phones and payphones. Check with your service provider for call costs.